

Jacket Lining Pattern

Ease is required in a jacket or coat lining for comfort and movement, to prevent the lining from controlling the outer shell and to prevent stress on the lining fabric since it generally has less than most fashion fabrics. These instructions show how to adjust the lining to build in sufficient ease. They also show how to make a lining pattern if one isn't provided.

Do not cut the lining until the garment has been fitted during the construction process. Any alterations made to the garment must be made to the lining pattern. If there are a lot of fitting adjustments, you may prefer to make these adjustments to the garment pattern, then use it to create a new lining pattern rather than to adjust the existing lining pattern.

A. To Build in Ease on an Existing Lining Pattern

1. Ensure a "drop" at the hem of the lining (a drop is a pleat at hem that gives ease for vertical movement): Compare the length of the lining to the length of the corresponding garment pattern piece. When measuring, include the hem allowance. Adjust lining pieces (front, back, side piece(s) and sleeves) so each piece is 1" shorter than the corresponding garment piece.
2. If the front lining pattern does not have a front shoulder dart to allow for ease over the bust, add one: (See illustration 1.)
 - a. Extend the shoulder line towards the neck.
 - b. Mark a point on this line 1 1/2" from the present neck edge (a).
 - c. Mark a point on the front edge in the bust point area (b).
 - d. Join these two points. This is the new cutting line.
 - e. During construction, fold a pleat in the center of the front shoulder so it matches the back shoulder.
3. Add a pleat to center back from neck edge to bottom. (See illustration 2.) Note: If your pattern has a center back vent, follow the existing pattern without alterations.
 - a. On the fold of lining fabric, chalk a line 1" from the folded edge the length of the center back seam.
 - b. Hand baste this line. (Machine basting may leave an imprint when pressed.)
 - c. Place the lining pattern with neck and hem edges of the center back on the basting line. If the center back seam is curved, the center back seam on the garment and on the lining will not match except at the neck and hem edges.

Note: By extending the pleat all the way to the bottom, the pleat can be adjusted to match the hem of the garment in case you need more or less lining girth.

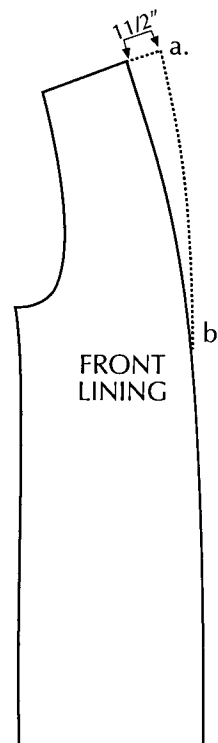


Illustration 1

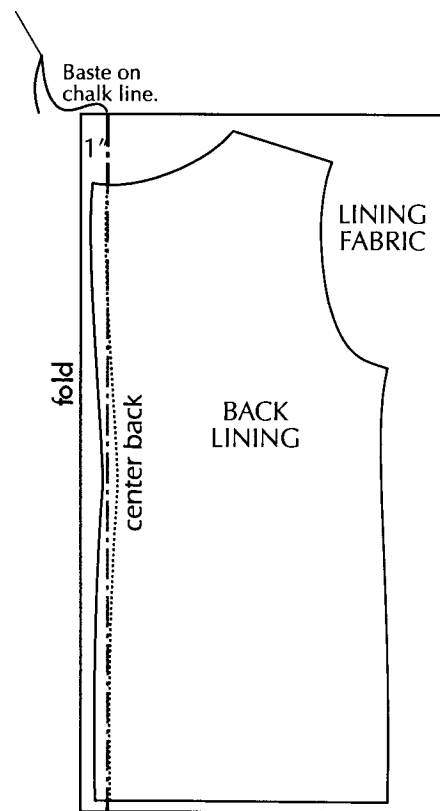


Illustration 2

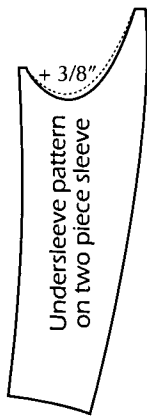


Illustration 3

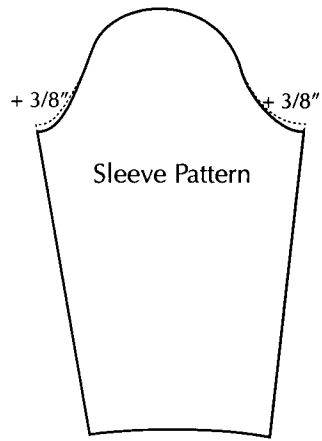


Illustration 4

4. Add extra fabric to the underarm of the sleeve lining to allow the fabric to go up and over the underarm seam:
 - a. On a two-piece sleeve, add 3/8" at the underarm. Taper to zero at the seam on both sides. (The easiest way to do this is to chalk the new cutting line directly on the fabric.) (See illustration 3.)
 - b. On a one piece sleeve, add 3/8" to the underarm at each side seam. Taper to zero in the notch area on both sides. (See illustration 4.)

B. Stitching

Add additional ease by stitching vertical seams (side seams, princess seams and sleeve seams) at 1/2" rather than 5/8". Stitch shoulder seams, armcye seams and join lining to facing with a 5/8" seam allowance.

C. To Make A Lining Pattern

1. Front: (See illustration 5.)
 - a. Place the front facing pattern on the front pattern. Trace the facing edge.
 - b. Draw the cutting line 1 1/4" (two 5/8" seam allowances) from this line towards center front.
 - c. Add pleat as in step A.1 above.
 - d. Remove 1" from bottom.

Tip: Rather than making a new pattern piece, the cutting line can be traced from the pattern onto the fabric with tracing wheel and paper

2. Back: (See illustration 6.)
 - a. Place back neck facing pattern on the back pattern. Trace the facing edge.
 - b. Draw the cutting line 1 1/4" from this line towards the neck edge.
 - c. Place pattern on center back of lining as in step A.3 above.
 - d. Remove 1" from bottom.

3. Sides piece(s): Remove 1" from bottom.
4. Upper and under sleeves:
 - a. Fold back vents.
 - b. Remove 1" from bottom.
 - c. At underarm, adjust as in step A.4 above.

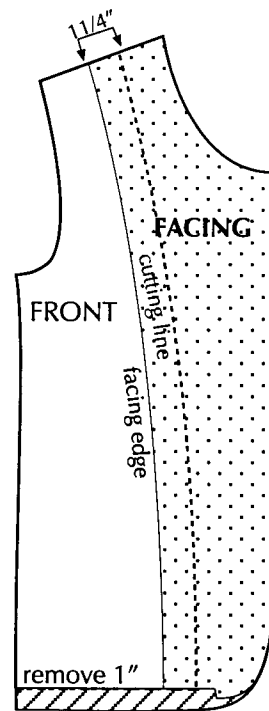


Illustration 5

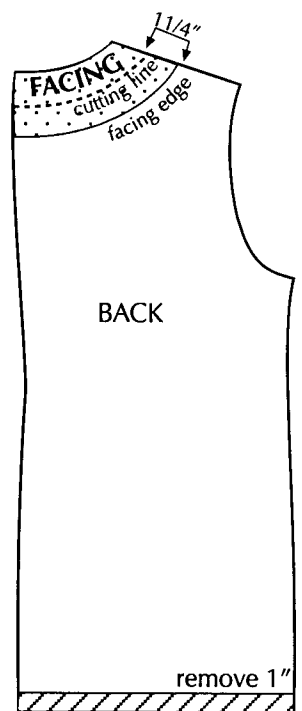


Illustration 6

Judy Barlup • 3840 136th Ave NE • Bellevue, WA 98005

Phone/Fax 425-885-5296 • 1-800-557-5563

www.uniquetechniques.com

© 2000 barlup